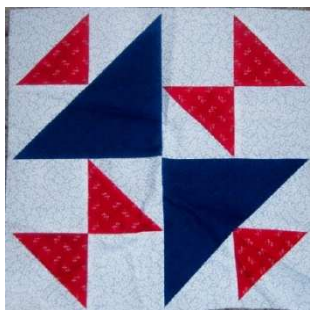
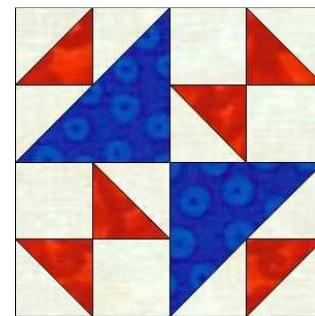


Block of the Month for July 2010



School Girl's Puzzle Quilt Block Pattern



Fabrics and Cutting:

Blue print: (1) 6-7/8" x 6-7/8" square cut in half once diagonally

Red print: (3) 3-7/8" x 3-7/8" squares

White background: (5) 3-7/8" x 3-7/8" squares -- cut *two of the squares* in half once diagonally and (4) 3-1/2" x 3-1/2" squares

Cutting will differ if you do not use the easy sandwich method to construct half square triangle units.

Make the School Girl's Puzzle Quilt Block

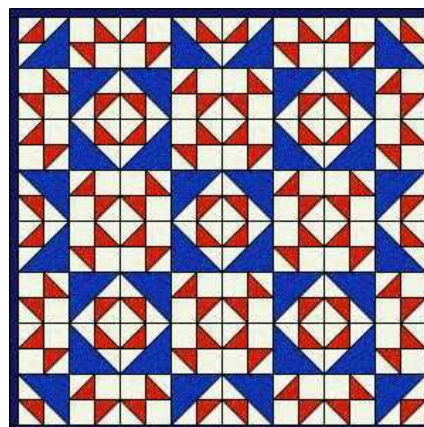
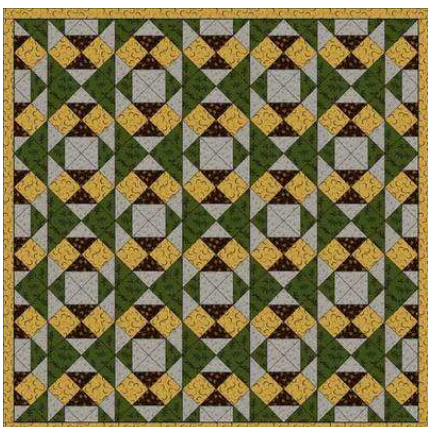
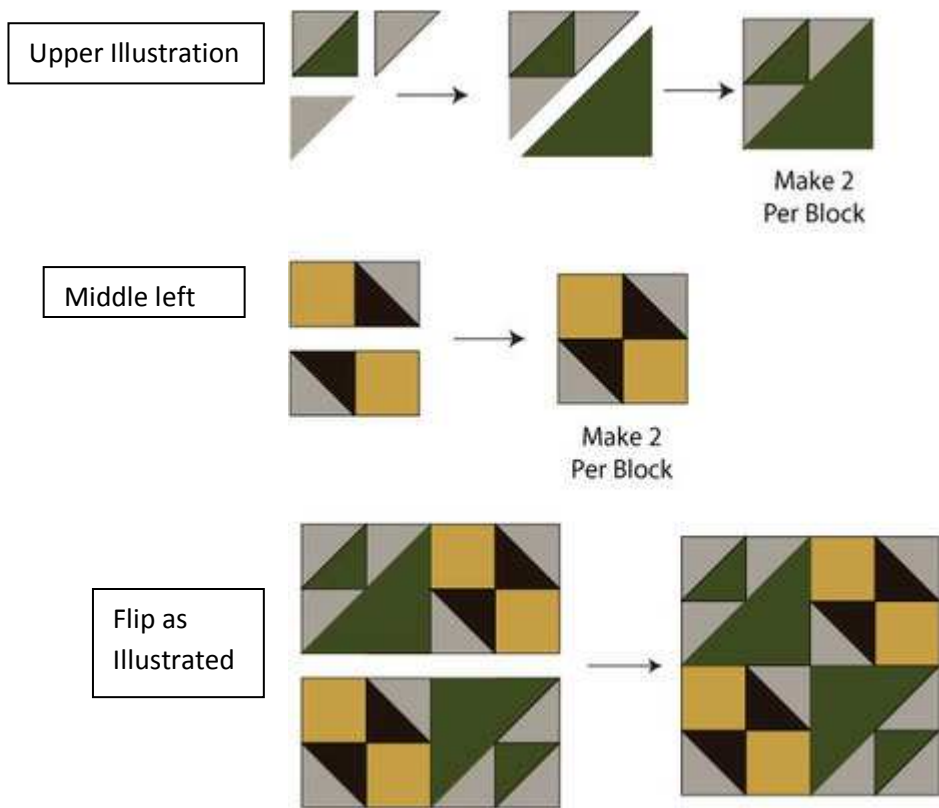
If you plan to make a quilt from many identical blocks, you might prefer to use a different method for half square triangle units, such as sewing them on a grid. Be sure to use a technique that will result in half square triangle units that *finish* at 3" x 3" (or are 3-1/2" x 3-1/2" before sewing them to their neighbors).

1. Pair a 3-7/8" White square with a Red square of the same size. Use the easy sandwich method to turn the pair into two half square triangle units, each with a White half and a Red half. When complete, the units should measure 3-1/2" x 3-1/2".
2. Arrange two White triangles cut by dividing a 3-7/8" square in half diagonally as shown in the upper left of the illustration, sewing them to sides of Step 1 unit. Press seam allowances towards the triangles.
3. Sew a large Blue triangle to the unit you just created as shown. Press seam allowance towards the Blue triangle. Repeat to make another identical unit.
4. Pair a 3-7/8" White square with a Red print square of the same size. Use the sandwich method to make two half square triangle units that measure 3-1/2" x 3-1/2".
5. Repeat to make two more White/Red print half square triangle units.

Please bring your completed Block to the July 2, 2010 PVQ meeting.

Block of the Month for July 2010

6. Sew a White square to the side of a White/Red triangle square unit as illustrated, middle left. Press seam allowance towards the square. Repeat to make another rectangular unit as shown.
7. Sew the units together as illustrated. Repeat to make a second identical unit. Press seam allowances either way.
8. Sew a Red/White unit to a White/Red/White unit as shown to create one row for the quilt. Press seam allowances towards the large triangle. Repeat to make another identical row.
9. Flip one row around as illustrated and join rows. Press. The quilt block should measure 12-1/2" x 12-1/2".



Please bring your completed Block to the July 2, 2010 PVQ meeting.